

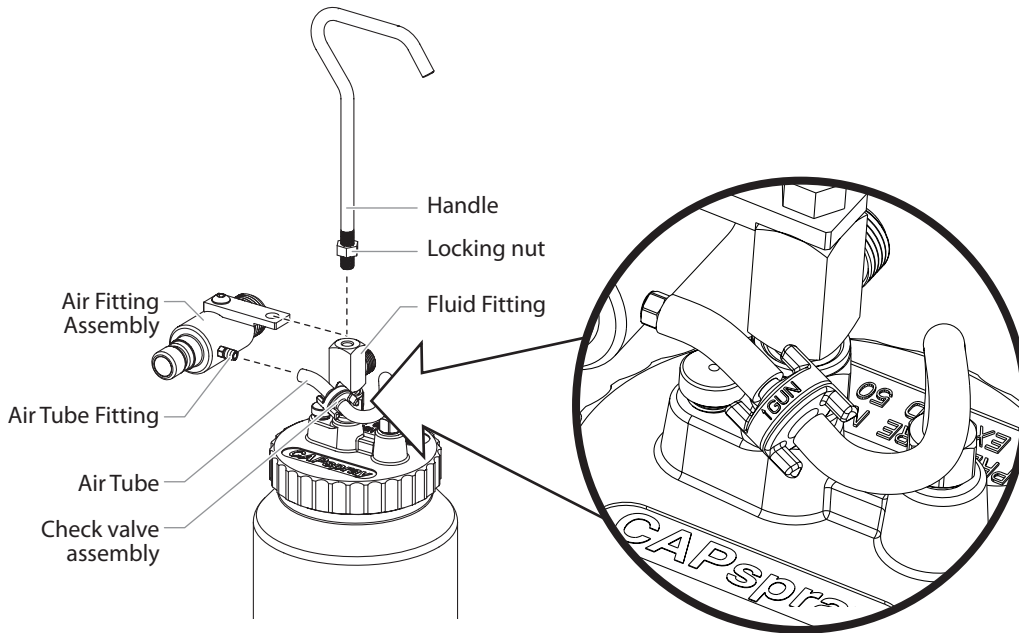
### Description

The 2-Quart Remote Pressure Pot can be used with the CAPSPRAY 75, 95, 105 and 115 units. This allows the user a larger spraying capacity than the standard 1-Quart cup, while adding maneuverability to the spray gun.

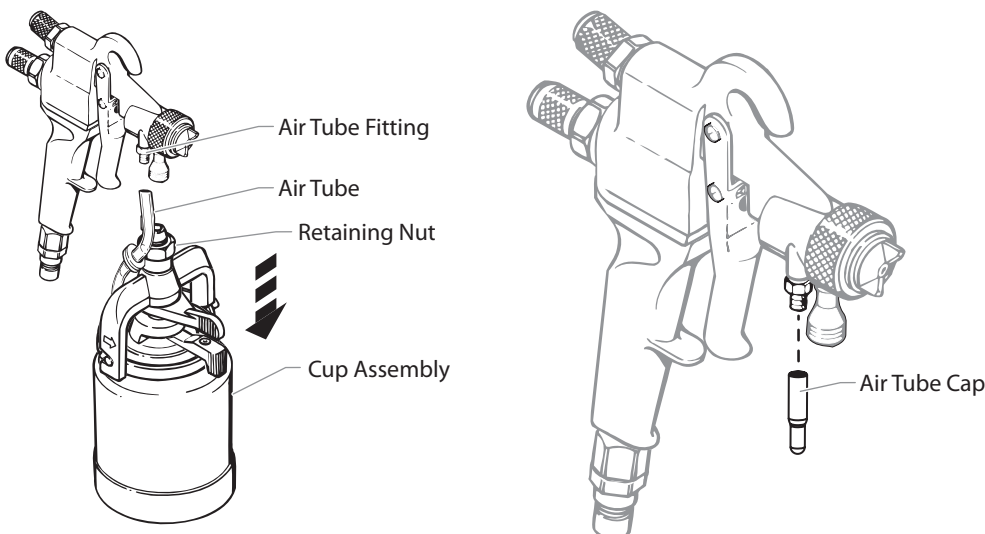
KIT PART NUMBER : 0524203

### Assembly

1. Insert the handle through the air fitting bracket and thread into the fluid fitting. Tighten for at least three (3) revolutions.
2. Tighten locking nut.
3. Push air tube over air tube fitting. Ensure that the check valve assembly is oriented as shown (see inset).

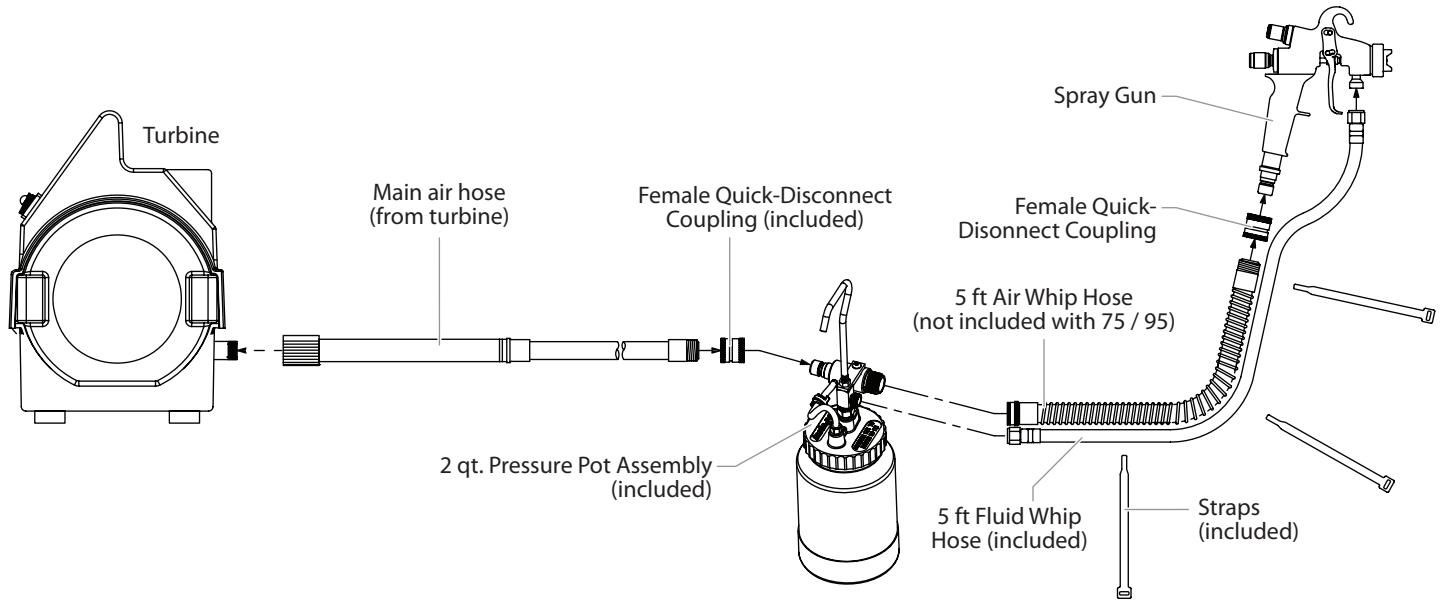


4. Convert the gun to pressure feed.
  - a. Loosen the retaining nut using a wrench and remove the one-quart cup assembly.
  - b. Pull the air tube off the air tube fitting on the spray gun.
  - c. Push a supplied air tube cap over the air tube fitting.



5. Connect hoses:
  - a. Make sure turbine is turned OFF and unplugged.
  - b. Attach remote pressure pot to the turbine via the hose configuration shown below.
  - c. Tighten the air hose connections by hand.
  - b. Tighten the fluid hose connections with an adjustable wrench.

**NOTE: If previously assembled, disconnect the 5 ft air whip hose from the main air hose, add the supplied female quick-disconnect to the end of the main air hose. Connect the 2 quart pressure pot as shown.**



## Replacing the Check Valve, Valve Seal, and Air Tubes

The check valve is a one-way valve designed to allow air into the cup, pressurizing the cup's contents. Because it is a one-way valve, it prevents paint from seeping up the air tube into the air passages of the hose. It also eliminates any delay in material flow when the gun is triggered by maintaining pressure in the cup.

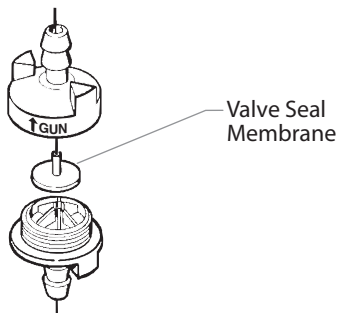
The check valve rotates open easily for cleaning. It contains a valve seal that can be removed and cleaned with soap and water for waterborne materials or a compatible solvent for other materials. To replace the check valve, the valve seal, and/or the air tubes:

1. Pull the lower air tube from the bottom of the check valve.
2. Pull the check valve from the upper air tube.
3. Unscrew the two halves of the check valve.
4. Remove the worn valve seal.
5. Clean the check valve body with a solvent appropriate to the type of material being used.

**NOTE: Thoroughly clean the inside of the top half of the check valve but do not scratch it.**

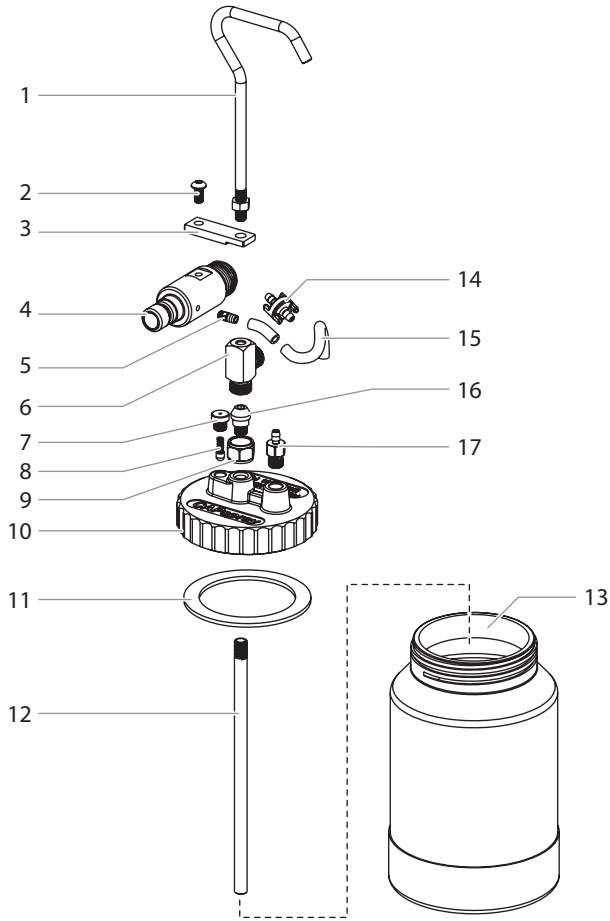
6. Insert a new valve seal, stem up, into the top of the check valve as shown.
7. Tighten the two halves of the check valve together.
8. Insert the top of the check valve into the upper air tube.

**NOTE: Insert the check valve into the air tube so that the arrow on the valve points toward the air fitting.**



9. Push the lower air tube onto the bottom of the check valve.

# Parts List



Item	Part No.	Description	Quantity
1	0524336	Handle.....	1
2	0524345	Screw, 1/4" - 28 x 1/2".....	1
3	0524331	Bracket, air fitting.....	1
4	0524330	Fitting, air.....	1
5	0277505	Fitting, air tube.....	1
6	0524343	Fitting, 90°.....	1
7	0524341	Knob, relief.....	1
8	0524342	Plunger, relief.....	1
9	0524340	Nut, fluid.....	1
10	0524334	Cap.....	1
11	0524356	Gasket.....	1
12	0524338	Tube, pickup.....	1
13	0524335	Pot.....	1
14	0276248	Check valve assembly.....	1
15	0524208	Tube, set (2).....	1
16	0524339	Fitting, fluid.....	1
17	0524344	Fitting, barbed, 3/16".....	1
	0524349	Fluid hose, 3/8" (not pictured).....	1
	0295727	Strap (not pictured).....	3
	0275625	Quick-Disconnect coupling (not pictured).....	1
	0524212	Pressure port cap (not pictured).....	3
	0276415	Spare valve membranes (not pictured).....	3

### Optional Accessories (sold separately)

0276257	Replacement valve membrane (10 pack)
0295600	Inlet tube filter
0524405A	5 ft. air whip hose

### UNITED STATES SALES & SERVICE

**WEB:** [www.titantool.com](http://www.titantool.com)

**PHONE:** 1-800-526-5362

**FAX:** 1-800-528-4826

1770 Fernbrook Lane

Minneapolis, MN 55447

### INTERNATIONAL

**WEB:** [www.titantool-international.com](http://www.titantool-international.com)

**EMAIL:** [international@titantool.com](mailto:international@titantool.com)

**FAX:** 1-763-519-3509