



# TITAN<sup>®</sup>

ACCESSORIES



**120**  
VOLTS

A man with a beard, wearing a hard hat and a safety vest, is holding a red and white spray gun. The background is a light, faded image of the same man and equipment.

# THE BEST AND LONGEST WARRANTY IN THE INDUSTRY

## **Three-Year Manufacturer's Defect**

We pledge that our sprayers are free from defects in materials and workmanship. This excludes normal wear items and consumables such as filters, piston, packings, tips, etc.

## **Lifetime DuraLife Brushless HE and PMDC Brushless Motor Warranty**

If the motor fails for any reason (including wear) for as long as you own the sprayer, we will replace the motor at no cost to you.

## **Limited Lifetime DCX Motor Warranty**

If the motor fails from normal usage for as long as you own the sprayer, we will replace the motor at no cost to you.

## **Gas Engine Warranty**

Three-year Honda® and two-years all others.

## **Two-Year Turbine Warranty**

## **Lifetime Drive Train Warranty**

If the drive train fails from normal usage for as long as you own the sprayer, we will replace the drive train at no cost to you.



# TITAN®

## ACCESSORIES

### 04 AIRLESS GUNS

An industry leader in spray gun technology – Titan offers a full line of the best quality airless guns for every application imaginable.

### 07 AIRLESS TIPS

Titan offers a full range of spray tips for a full range of applications.

### 12 GUN ACCESSORIES

Titan has a guard for every tip and the best paint filters available. And if your arms just aren't long enough we have a reach tool or gun extension.

### 16 AIRLESS HOSES

Designed to withstand time and pressure, Titan's full line of airless hoses will have you covered for every job.

### 18 ROLLERS

Our rollers have the speed of a sprayer and the control of a roller.

### 19 LIQUIDS

Titan has all the products you need to keep your equipment/accessories clean and functioning in top condition.

### 20 FITTINGS

Need more hose length or need to alter the angle of the hose connected to the sprayer? You need Titan manifolds and fittings.

### 22 LINE STRIPING ACCESSORIES

Check out our hard-working assortment of accessories devoted specifically to pavement and turf marking.

### 24 HVLP GUNS & ACCESSORIES

For contractors and finishing professionals who expect flawless results, we have the tools for the perfect finish.

## OUR MISSION

When your business depends on the tools you use,  
you need to count on the people who make them.

Our relentless commitment to helping all professional painters be  
their best leads to better work, improved ROI and growing business.



## RED SERIES AIRLESS GUNS

INTRODUCING

# RX-APEX

## AIRLESS SPRAY GUN

- 24 All-Day Trigger®**  
28% lighter trigger pull force and 74% less hold force.
- FingerPrint+ Grip™**  
Fully adjustable grip delivers maximum customization.
- 2X LIFE Infinity Packing®**  
2X the gun life by reversing the seat and changing the ball.
- Free-Flow Swivel**  
Only direct feed airless gun with built-in swivel.

- Comes with two-finger trigger
- Pressure rated at 5000 PSI (34.5 MPa)

DESCRIPTION	PART NO.
RX-Apex, Non-Filtered Airless Gun with TR <sup>1</sup> Tip	0538070
RX-Apex, Filtered Airless Gun with TR <sup>1</sup> Tip	0538075
RX-Apex, Non-Filtered Airless Gun, Hose & TR <sup>1</sup> Tip Kit	0538072
RX-Apex, Non-Filtered, High Pressure Airless Gun, Hose & TR <sup>1</sup> Tip Kit	0538073
RX-Apex, Filtered Airless Gun, Hose & TR <sup>1</sup> Tip Kit	0538076
RX-Apex, Filtered Airless Gun, Hose & TR <sup>1</sup> HEA Tip Kit	0538077

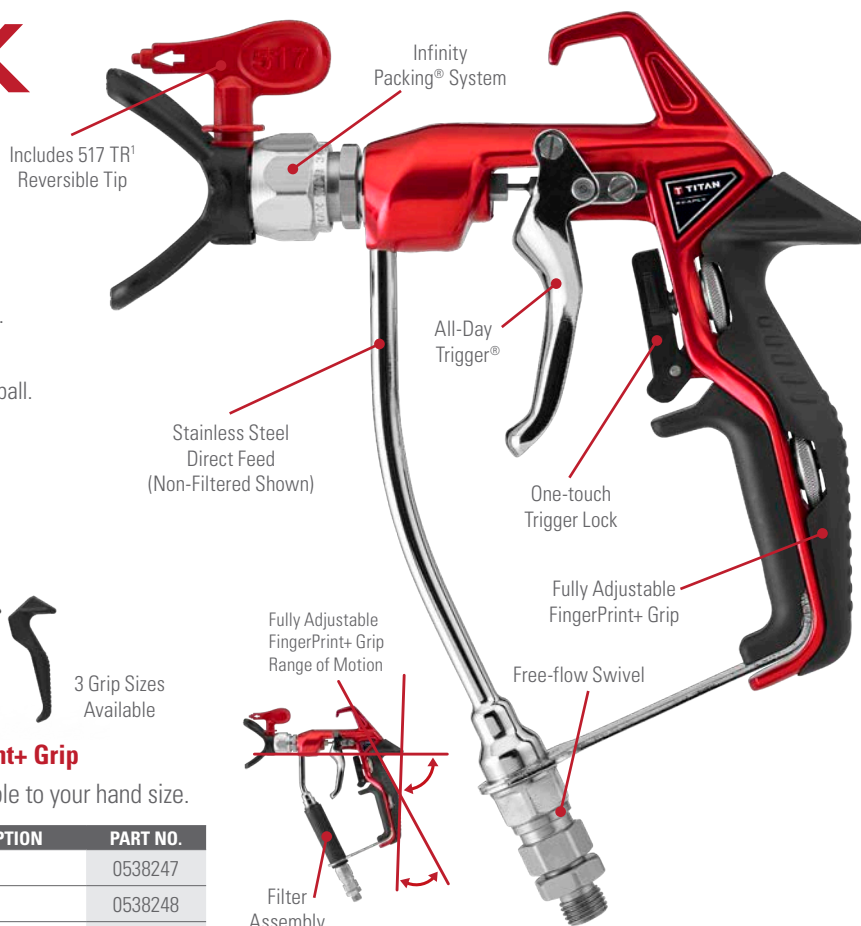


3 Grip Sizes Available

### FingerPrint+ Grip

Customizable to your hand size.

DESCRIPTION	PART NO.
Small	0538247
Medium	0538248
Full	0538256



# RX-PRO®

## AIRLESS SPRAY GUN

- Ultra-light Trigger**  
30% lighter than the competitors trigger pull decreasing fatigue.
- FingerPrint Grip®**  
Customize the grip to comfortably fit any painter's hand.
- 2X LIFE Infinity Packing®**  
2X the gun life by reversing the seat and changing the ball.
- Onboard Tools**  
Smart tools that make jobsite life easier.

- Comes with both two and four-finger trigger
- Pressure rated at 3600 PSI (24.8 MPa)

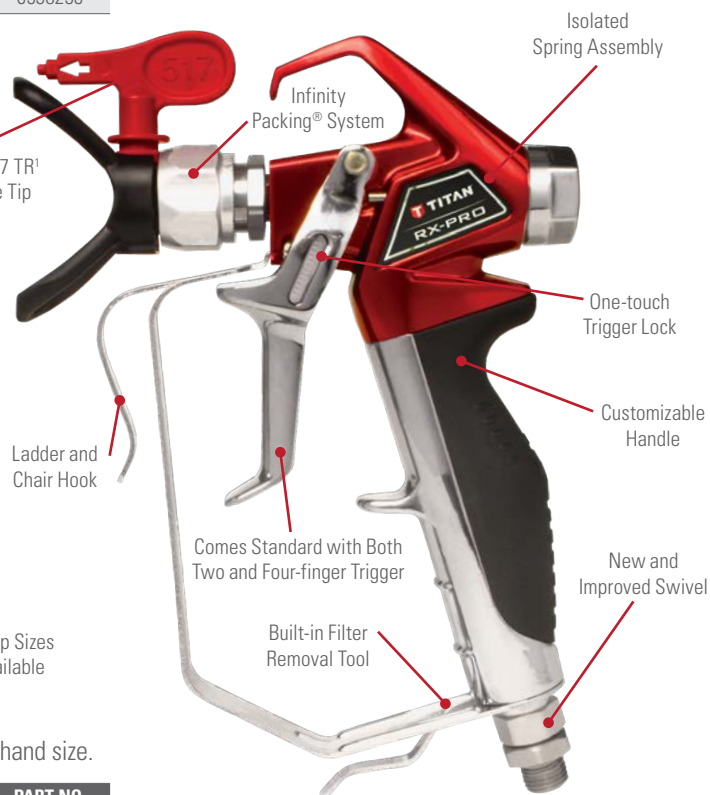


3 Grip Sizes Available

### FingerPrint Grip




Customizable to your hand size.

DESCRIPTION	PART NO.
Small	0538217
Medium	0538218
Large	0538219



# RX-80™

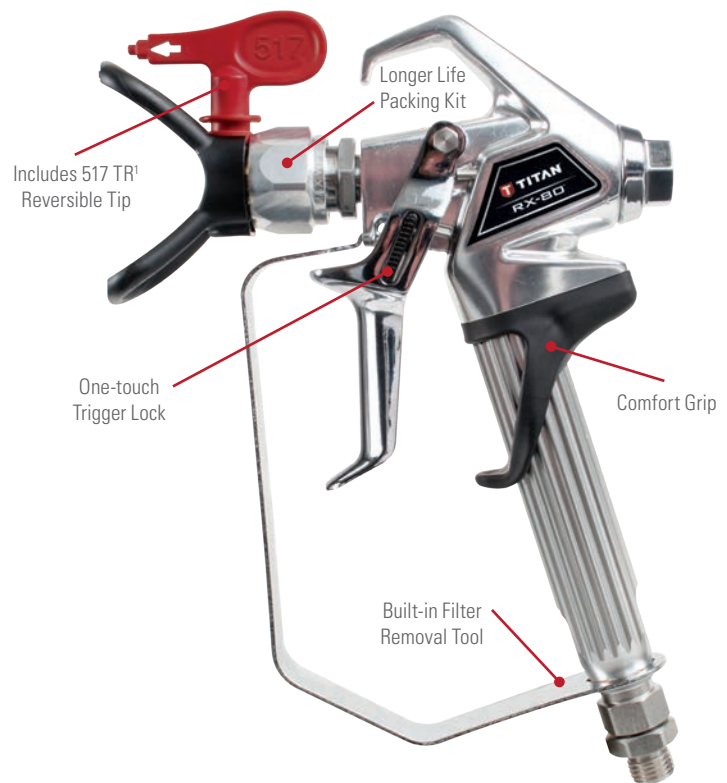
## AIRLESS SPRAY GUN

-  **Comfort Grip™**  
Ergonomic design brings added comfort.
-  **Longer Life Packing Kit**  
Lasts longer with improved performance.
-  **Onboard Tools**  
Smart tools that make jobsite life easier.

- Comes with two or four-finger trigger
- Pressure rated at 3600 PSI (24.8 MPa)

DESCRIPTION	PART NO.
RX-80 Airless Gun, Four-Finger with TR <sup>1</sup>	0538005
RX-80 Airless Gun, Two-Finger with TR <sup>1</sup>	0538006
RX-80 Airless Gun, Four-Finger with SC-6+	0538007
RX-80 Airless Gun, Two-Finger with SC-6+	0538008
RX-80 4-Finger Gun, Hose and Tip Kit with TR <sup>1</sup> *	0538010
RX-80 4-Finger Gun, Hose and Tip w/ SC-6+*	0538011
RX-80 Repair Kit	0538215

\*Includes additional 3' whip hose and a 2-finger trigger.



## S-Series: Spray Specialized Coatings with Ease

### S-3 Airless Gun

- In-handle filter
- Easy four-finger trigger pull
- 1/4" swivel reduces hose kinks
- Pressure rated at 3900 PSI (26.9 MPa)



DESCRIPTION	PART NO.
S-3 Gun with TR <sup>1</sup> Tip	0550060
S-3 Gun, Hose and Tip Kit	0550065
S-3 Repair Kit	550-275

### S-7 Airless Gun

- In-handle filter
- Available in two swivel sizes
- Easy four-finger trigger pull
- Swivel reduces hose kinks
- Includes 517 TR<sup>1</sup> high pressure, heavy-duty reversible tip and guard
- Pressure rated at 7700 PSI (53.1 MPa)



DESCRIPTION	PART NO.
S-7 Gun with 1/4" Swivel	550-260
S-7 Gun with 3/8" Swivel	550-270
S-7 Repair Kit	550-276

## Entry Level Contractor Airless Guns

### LX-40 Airless Gun 550-540

- All metal construction
- In-handle filter
- Tungsten carbide ball valve ensures long life
- Includes 517 TR<sup>1</sup> reversible tip
- Pressure rated at 3000 PSI (20.7 MPa)



### LX-50 Airless Gun 0286021

- All metal construction
- In-handle filter
- Tungsten carbide ball valve ensures long life
- Includes 517 TR<sup>1</sup> reversible tip
- Pressure rated at 3000 PSI (20.7 MPa)



# FROM FINE FINISHING TO THE HARSHTEST COATINGS

From the harshest coatings (Mastic Guns) to detailed fine finish work (GM 3600) Titan has a gun that fits your needs.



GM 3600 Gun

M-4 Mastic Gun

## M-4 and M-8 Mastic Guns

- Straight line fluid passage allows max flow rate
- Angled handle for increased comfort
- Adjustable needle packing prolongs the life of critical wear parts
- Swivel allows freedom of movement without hose kinking
- Lightweight metal construction

DESCRIPTION	PSI	PART NO.
M-4 Mastic Gun	3600 (24.8 MPa)	0289013
M-8 Mastic Gun	7700 (53.1 MPa)	0289014
M-4 / M-8 Repair Kit	---	2347489

## GM 3600 Gun

This air-assisted airless gun works with both standard reversible tips and Brilliant™ Flat Tips. It offers ergonomic comfort and a reversible tip system without sacrificing finish quality.

- Inline filter for clean coatings
- Stainless steel fluid passages
- Pressure rated at 3600 PSI (24.8 MPa)

DESCRIPTION	PART NO.
3600 AirCoat Gun with Reversible Tip Guard	0524357
Air Cap Assembly for Reversible Tip	0524359
3600 AirCoat Gun with Flat Tip Guard*	0524358
Air Cap Assembly for Flat Tip	0524360
AirCoat Test Air Cap Kit	0524229

\*Includes 9/20 Flat Tip.

### BRILLIANT™ FLAT TIP SIZES (For GM 3600 Gun)

DESIGNATION	ORIFICE DIAMETER	ANGLE	RECOMMENDED FILTER	PART NO.
9/20	0.009	20	180 Mesh	0526209
9/40	0.009	40	180 Mesh	0526409
11/10	0.011	10	180 or 100 Mesh	0526111
11/20	0.011	20	180 or 100 Mesh	0526211
11/40	0.011	40	180 or 100 Mesh	0526411
13/10	0.013	10	100 Mesh	0526113
13/20	0.013	20	100 Mesh	0526213
13/40	0.013	40	100 Mesh	0526413
15/10	0.015	10	100 Mesh	0526115
15/20	0.015	20	100 or 50 Mesh	0526215
15/40	0.015	40	100 or 50 Mesh	0526415
17/20	0.017	20	50 Mesh	0526217
17/40	0.017	40	50 Mesh	0526417

## For Textured Applications

### Splatter Nozzle 765-360

Add the splatter nozzle to any airless spray gun for smooth texture applications including orange peel and knock down. For best results use with S or M Series Airless Guns.

Air requirement 4-12 CFM at full open.



## GM5000 Electrostatic Gun 0521133

Up to 20% higher transfer efficiency than competitive electrostatic sprayers.

- High-voltage ON/OFF at the gun
- Automatic error indication
- Easy to adjust atomization and pattern shape



# THE INDUSTRY LEADER IN TIP TECHNOLOGY

Airless spray tips are a key component to the successful operation of an airless spray system. They define the spray pattern, control the flow, atomize the coating and ultimately tell the pump how hard it must work. A proper understanding of airless tips is critical to the success of any airless application.



## Tip Characteristics

It is important to remember that the orifice size, in conjunction with the fan-width, determines the spray characteristics of the tip.

## Tip Wear

When beginning a project, choosing the right tip size and fan width will determine both coating consumption and production time. If the tip size is wrong — either by choice or through wear — mil thicknesses will be too heavy and the finish will be unprofessional.

The spray pattern chart demonstrates what happens as a tip wears. As wear occurs, the pattern size decreases and the orifice size increases. You will have to make more passes to cover the same area. There is no standard rate of tip wear due to the variation of the abrasiveness of all coatings.

## Examples for Understanding Airless Tips

### Example A:

The larger the orifice with the same fan width, the greater the volume of paint applied to the area.





Fan Width:	10"	10"	10"
Orifice Size:	.017	.021	.026
Tip Number:	517	521	526
	Least Volume	More Volume	Most Volume





### Example B:

The larger the fan width with the same orifice means the same amount of material is being applied over a greater area. The result is less volume of paint per square inch.

Fan Width:	8"	12"	16"
Orifice Size:	.017	.017	.017
Tip Number:	417	617	817
	Narrow Fan	Medium Fan	Large Fan

## How a Tip Fan Pattern Typically Wears

SC-6+ WITH 517 TIP			
SPRAY PATTERN WIDTHS			
New 517	Worn to 419	Worn to 321	Worn to 223
			
FLOW RATES			
.31 gpm (1.17 lpm)	.39 gpm (1.47 lpm)	.47 gpm (1.78 lpm)	.57 gpm (2.15 lpm)
FLOW RATE INCREASE			
0%	26%	52%	84%

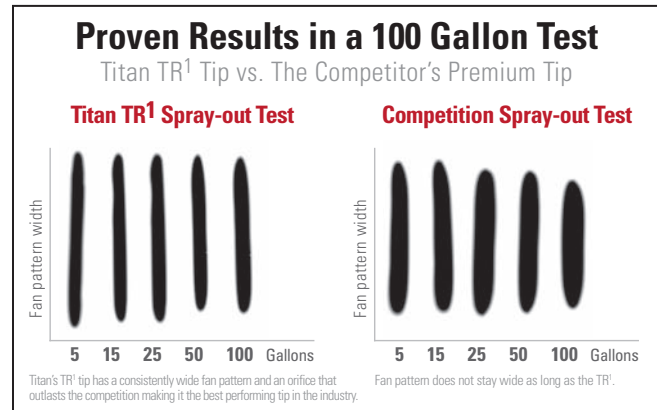
TR <sup>1</sup> WITH 517 TIP			
SPRAY PATTERN WIDTHS			
New 517	Worn to 519	Worn to 521	Worn to 523
			
FLOW RATES			
.31 gpm (1.17 lpm)	.39 gpm (1.47 lpm)	.47 gpm (1.78 lpm)	.57 gpm (2.15 lpm)
FLOW RATE INCREASE			
0%	26%	52%	84%



# PREMIUM

## TR<sup>1</sup> REVERSIBLE TIP

- The best overall performing tip in the industry
- Fan pattern stays wider longer
- An orifice that outlasts competitive tips delivering consistent film thickness and less wasted paint
- Fits all Titan and most other industry spray gun guards



### TR<sup>1</sup> Tips 695-XXX

		ORIFICE SIZE (INCHES)									
	INCHES	MM	0.009	0.011	0.013	0.015	0.017	0.019	0.021	0.025	0.027
FAN PATTERN WIDTH	2-4	51-102									
	4-6	102-152	209	211	213	215	217				
	6-8	152-203		311	313	315	317				
	8-10	203-254		411	413	415	417				
	10-12	254-305			513	515	517	519	521	525	
	12-14	305-356									627
	Flow (GPM)	---	0.09	0.12	0.18	0.24	0.31	0.39	0.47	0.67	0.78
	Flow (LPM)	---	0.34	0.45	0.68	0.91	1.17	1.47	1.78	2.53	2.95

Maximum Working Pressure: 5000 PSI (34.5 MPa)



### TR<sup>1</sup> High Pressure Tips 696-XXX

			ORIFICE SIZE (INCHES)																			
FAN PATTERN WIDTH	INCHES	MM	0.007	0.009	0.011	0.013	0.015	0.017	0.019	0.021	0.023	0.025	0.027	0.029	0.031	0.033	0.035	0.037	0.039	0.043	0.045	0.055
	2-4	51-102	107	109	111	113	115	117	119													
	4-6	102-152		209	211	213	215	217	219	221	223	225	227									
	6-8	152-203		309	311	313	315	317	319	321	323	325	327	329	331	333	335	337	339			
	8-10	203-254		409	411	413	415	417	419	421	423	425	427	429	431	433	435		439	443	445	455
	10-12	254-305		509	511	513	515	517	519	521	523	525	527	529	531	533	535	537	539	543	545	555
	12-14	305-356		609	611	613	615	617					627									655
	14-16	356-406						717	719	721	723	725	727		731	733	735					
	16-18	406-457						817	819	821							835	837	839	843		
	18-20	457-508										923	925	927		931			937			
Flow (GPM)	---	0.05	0.09	0.13	0.18	0.24	0.31	0.39	0.47	0.57	0.67	0.78	0.91	1.03	1.17	1.32	1.40	1.64	1.99	2.18	3.26	
Flow (LPM)	---	0.19	0.34	0.45	0.68	0.91	1.17	1.47	1.78	2.15	2.53	2.95	3.44	3.89	4.42	4.99	5.29	6.20	7.52	8.24	12.32	

Maximum Working Pressure: 7700 PSI (53.1 MPa)

### TR<sup>1</sup> Line Striping Tips 697-XXX

			ORIFICE SIZE (INCHES)												
FAN PATTERN WIDTH	INCHES	MM	0.013	0.015	0.017	0.019	0.021	0.023	0.025	0.027	0.029	0.031	0.035	0.039	0.043
	2	51	213	215	217	219									
	4	102	413	415	417	419	421	423	425	427	429	431	435	439	443
	6	152		615	617	619	621	623	625	627	629	631	635	639	643
	8–10	203–254					821	823	825	827	829	831	835	839	843
	Flow (GPM)	---	0.18	0.24	0.31	0.39	0.47	0.57	0.67	0.78	0.91	1.03	1.32	1.64	1.99
	Flow (LPM)	---	0.68	0.91	1.17	1.47	1.78	2.15	2.53	2.95	3.44	3.89	4.99	6.20	7.52

Maximum Working Pressure: 5000 PSI (34.5 MPa)





# TR<sup>1</sup> HEA TIP



Perfect for interior and exterior residential



## The Right Mix For Production 330-XXX

	INCHES	MM	ORIFICE SIZE (INCHES)					
			0.011	0.013	0.015	0.017	0.019	0.021
FAN PATTERN WIDTH	4-6	102-152	211	213				
	6-8	152-203	311	313				
	8-10	203-254	411	413	415	417		421
	10-12	254-305			515	517	519	521
	12-14	305-356			615	617	619	621
	Flow (GPM)	---	0.09	0.12	0.18	0.24	0.31	0.47
	Flow (LPM)	---	0.34	0.45	0.68	0.91	1.17	1.79

Maximum Working Pressure: 5000 PSI (34.5 MPa)

## HEA | HIGH EFFICIENCY AIRLESS™

### Revolutionary Low Pressure Technology

- Optimized to spray all architectural paints and coatings at 1,000 psi at production speed
- Decreases overspray up to 55% allowing contractors to spray more
- Less pressure equals less stress extending pump life and extending time between repacks
- Two times the life of a standard reversible tip
- Patented design

### HIGHLY EFFICIENT FAN PATTERN



Latex paint through a standard 517 tip at 1,000 PSI



Latex paint through a HEA 517 tip at 1,000 PSI

- Feathered edge provides consistent coverage
- More forgiving pattern that decreases runs and drips
- Less kickback when triggered providing more control and less overspray
- Fits all industry standard guards

### Maximize the Performance of your HEA Tip



HEA Gauge Assembly Kit 0580495

# HIGH QUALITY SC-6+ REVERSIBLE TIP

- The industry's longest-lasting orifice
- Up to 22% wider fan pattern
- Fits all Titan and most industry standard guards



SC-6+ Tips 662-XXX

			ORIFICE WIDTH (INCHES)																			
FAN PATTERN WIDTH	INCHES	MM	0.007	0.009	0.011	0.013	0.015	0.017	0.019	0.021	0.023	0.025	0.027	0.029	0.031	0.033	0.035	0.039	0.043	0.045	0.051	0.055
	2-4	51-102	107	109	111	113	115	117														
	4-6	102-152	207	209	211	213	215	217	219	221	223	225	227	229	231	233	235					
	6-8	152-203	307	309	311	313	315	317	319	321	323	325	327	329	331	333	335					
	8-10	203-254	407	409	411	413	415	417	419	421	423	425	427	429	431	433	435	439	443	445	451	455
	10-12	254-305		509	511	513	515	517	519	521	523	525	527	529	531	533	535	539	543	545	551	555
	12-14	305-356		609	611	613	615	617	619	621	623	625	627	629	631	633	635	639	643	645	651	655
	14-16	356-406							719	721					731		735					
	16-18	406-457									821					831						
	Flow (GPM)	---	0.05	0.09	0.13	0.18	0.24	0.31	0.39	0.47	0.57	0.67	0.78	0.91	1.03	1.17	1.32	1.64	1.99	2.18	2.80	3.26
Flow (LPM)	---	0.19	0.34	0.45	0.68	0.91	1.17	1.47	1.78	2.15	2.53	2.95	3.44	3.89	4.42	4.99	6.20	7.52	8.24	10.58	12.32	

Maximum Working Pressure: 5000 PSI (34.5 MPa)

SC-6+ Widespray Tips 661-XXX

			ORIFICE SIZE (INCHES)									
FAN PATTERN WIDTH	INCHES	MM	0.019	0.021	0.023	0.025	0.027	0.029	0.031	0.033	0.035	0.037
	24–26	610–660	1219	1221	1223	1225	1227	1229	1231	1233	1235	1237
	Flow (GPM)	---	0.39	0.47	0.57	0.67	0.78	0.91	1.03	1.17	1.32	1.47
	Flow (LPM)	---	1.47	1.78	2.15	2.53	2.95	3.44	3.89	4.42	4.99	5.56

Maximum Working Pressure: 5000 PSI (34.5 MPa)

SC-6+ Synergy Fine Finishing Tips

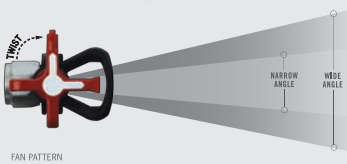
671-XXX

		ORIFICE SIZE (INCHES)				
FAN PATTERN WIDTH	INCHES	MM	0.008	0.010	0.012	0.014
	4-6	102-152	208	210	212	214
	6-8	152-203	308	310	312	314
	8-10	203-254	408	410	412	414
	10-12	254-305		510	512	
	12-14	305-356			612	
	Flow (GPM)	---	0.07	0.11	0.16	0.21
	Flow (LPM)	---	0.26	0.42	0.60	0.79

Maximum Working Pressure: 5000 PSI (34.5 MPa)

# VERSATILE TR<sup>2</sup> REVERSIBLE TIP

- One tip with two fan patterns – it's speed and control at your fingertips.
- Switch to wide or narrow fan pattern with a twist
- Consistent film thickness when using wide or narrow fan pattern



TR<sup>2</sup> Tips 692-XXX

			ORIFICE SIZE (INCHES)							
FAN PATTERN WIDTH	INCHES	MM	0.011	0.013	0.019	0.021	0.023	0.027	0.031	0.035
	6-8	152-203	311	313						
	8-10	203-254								
	10-12	254-305			519	521				535
	12-14	305-356						627		635
	16-18	406-457							831	
	24-26	610-660					1223		1231	
	Flow (GPM)	---	0.13	0.18	0.39	0.47	0.57	0.78	1.03	1.32
	Flow (LPM)	---	0.45	.068	1.47	1.78	2.15	2.95	3.89	4.99

Maximum Working Pressure: 5000 PSI (34.5 MPa)



# A FULL SPECTRUM OF SPRAY TIPS

## FOR A FULL RANGE OF APPLICATIONS

### Flat Tips 002-XXX

- Precision machined from the highest quality Tungsten Carbide
- Solvent-proof seal holds up against the harshest coatings
- Pressure rated to 5000 PSI (34.5 MPa)



		ORIFICE SIZE (INCHES)										
	INCHES	MM	.007	.009	.011	.013	.015	.017	.018	.019	.021	.023
FAN PATTERN WIDTH	2-4	51-102	107	109	111		115	117		119	121	223
	4-6	102-152	207	209	211	213	215	217		219	221	225
	6-8	152-203		309	311	313	315	317	318	319	321	323
	8-10	203-254	407	409	411	413	415	417	418	419	421	423
	10-12	254-305	507	509	511	513	515	517	518	519	521	523
	12-14	305-356	607		611	613	615	617	618	619	621	623
	14-16	356-406				713	715	717		719	721	723
	16-18	406-457			811	813	815	817	818	819	821	823
	18-20	457-508				913	915		918			923
	20-22	508-559						1017			1021	
	22-24	559-610										
	24-26	610-660				1213	1215		1218		1221	1223
	26-28	660-711										
	Flow (GPM)	---	0.05	0.09	0.13	0.18	0.24	0.31	0.35	0.39	0.47	0.57
	Flow (LPM)	---	0.19	0.34	0.49	0.68	0.91	1.17	1.32	1.47	1.78	2.15

		ORIFICE SIZE (INCHES)																				
	INCHES	MM	.025	.026	.027	.029	.031	.033	.035	.036	.039	.041	.042	.043	.047	.049	.052	.055	.058	.062	.072	
FAN PATTERN WIDTH	2-4	51-102																				
	4-6	102-152	225				231															
	6-8	152-203	325		327		331			336			342				352					
	8-10	203-254	425	426	427	429	431	433	435	436	439	441		443		449	452				472	
	10-12	254-305	525		527	529	531		535	536	539			543		549	552		558	562		
	12-14	305-356	625	626	627		631	633	635	636		641		643			652	655				
	14-16	356-406	725		727		731		735													
	16-18	406-457	825		827		831		835	836	839			843	847					862		
	18-20	457-508	925	926			931			936										962		
	20-22	508-559					1031															
	22-24	559-610								1136				1143								
	24-26	610-660		1226		1229	1231															
	26-28	660-711								1336												
		Flow (GPM)	---	0.67	0.73	0.78	0.91	1.03	1.17	1.32	1.40	1.64	1.81	1.90	1.99	2.38	2.58	2.91	3.26	3.62	4.14	5.58
		Flow (LPM)	---	2.53	2.76	2.95	3.44	3.89	4.42	4.99	5.29	6.20	6.84	7.18	7.52	9.00	9.75	11.00	12.32	13.68	15.65	21.09

### Adjustable Self-Cleaning Tips 341-XXX

- Fully adjustable fan widths from 2" to 24" reduce overspray
- Perfect when changing from spraying walls to cutting in for trim work or around windows
- Self-cleaning feature eliminates costly downtime

ORIFICE RANGE	COATING RANGE	PART NO.
.005-.018	Lacquer and Stain	341-015
.007-.019	Lacquer and Stain	341-020
.007-.026	Lacquer and Enamels	341-024
.011-.026	Lacquer and Enamels	341-028
.017-.035	High Builds	341-041
.021-.054	Very Heavy	341-049



Adjustable  
Self-Cleaning Tip



Metering  
Orifice

### Metering Orifice 512-XXX

Designed to produce a more complete atomization of the spray pattern. Increases your transfer efficiency by allowing you to spray at lower pressures.

When ordering, always use a metering orifice that is at least .004 larger than the spray tip being used. Example: a .019 tip should be used with a .023 Metering Orifice.

ORIFICE - INCHES	MAX. RECOMMENDED TIP SIZE	PART NO.
.011	.007	512-011
.013	.009	512-013
.015	.011	512-015
.018	.013	512-018
.021	.017	512-021
.023	.019	512-023
.026	.021	512-026
.031	.026	512-031
.035	.031	512-035
.039	.035	512-039



# A GUARD FOR EVERY TIP

Titan tip guards are designed to maximize airflow with minimal overspray. With a guard for every tip and the universal fitting which matches most industry standard guns we have you covered.



## No Build Guard (7/8") 0289228

Aerodynamic dimple design allows for better airflow and less paint build up. Seal cavity on safety guard has large "flats" for quick and easy installation of seal.

- Rotate guard without loosening from gun
- No tools needed for installation
- Interchangeable with most industry spray guns
- Pressure rated at 5000 PSI (34.5 MPa)

## High Pressure Tip Guard (7/8") 661-027

- Interchangeable with most industry spray guns
- Pressure rated at 7700 PSI (53 MPa)

## Adjustable and Flat Tip Guard

- Interchangeable with most industry spray guns
- Pressure rated at 5000 PSI (34.5 MPa)



## Seals

DESCRIPTION	PART NO.
Metal Retainer	651-040
Black Seal, Latex	651-042
White Seal, Solvent Resistant	651-020
White Seal, Solvent Resistant (6-pack)	661-021
Seal and Retainer Kit, Solvent Resistant (5-pack)	661-020
Seal and Retainer Kit, Solvent Resistant (12-pack)	651-060
Gasket Kit, 1/8" (12-pack)	711-612A
Gasket Kit, 1/16" (12-pack)	711-606

# THE BEST FILTERS AVAILABLE

Nothing destroys a piston or a gun tip faster than debris in the coating. That's why you need the best paint filters available. Titan gun filters and manifold filters are designed for long life and maximum protection. They are made from stainless steel for strength and service. We offer a wide variety of mesh sizes from 0 to 150.

## Gun and Pump Filters

Unthreaded filter design for quick and easy replacement.

For use with RX-Pro™, RX-80™, G-10, LX-30, LX-40, LX-50, LX-70, S-3 and S-7.

UNTHREADED		
FILTERS	BULK PART NO.	2-PACK PART NO.
Coarse (Green)*	581-059	0089957
Medium (White)	581-060	0089958
Fine (Yellow)	581-062	0089959
Extra Fine (Red)	581-061	0089960

\*Manifold filter for Advantage 400.



For use with LX-80<sup>II</sup> and LX-80 Platinum.

THREADED		
FILTERS	BULK PART NO.	2-PACK PART NO.
Coarse (Green)*	540-030	500-200-03
Medium (White)	540-060	500-200-06
Fine (Yellow)	540-100	500-200-10
Extra Fine (Red)	540-150	500-200-15

\*Manifold filter for 440i and Impact 400.



 Pump Manifold Filters

## Pump Manifold Filters

For use on Impact® 440–1140; 640ix–1140ix and Elite 3500.

MESH	PART NO.
Coarse-30 Mesh	730-067-30
Medium-60 Mesh	730-067
Fine-100 Mesh	730-067-10

For use on PowrTwin™ 4900, 5500, 6900, 8900, 10000 and 12000 Plus. PowrBeast™ 4700/7700/9700

MESH	PART NO.
Mastic-0 Mesh	930-004
Coarse-5 Mesh	930-005
Medium-50 Mesh*	930-006
Fine-100 Mesh	930-007

\*Standard with sprayer. Includes ball.



For use on Hydra™, PowrTwin 3500 and 4500.

MESH	PART NO.
Coarse-5 Mesh	920-001
Medium-50 Mesh*	920-004
Fine-100 Mesh	920-005

\*Standard with sprayer, excludes ball.  
Ball check sold separately (920-103).

For use on all 10" PowrCoat™ models.

MESH	PART NO.
Medium-60 Mesh	0533514

For use on Titan E15, E20, G40 and G55.

MESH	PART NO.
Coarse-30 Mesh	761-042

## Pump Manifold Filter Plugs



MESH	PART NO.
Impact 400	0532357
Impact 440, 540, 640	0552934
Impact 740-1140 and 1200SF	0558668



## Inlet Screens

SMALL		
MESH	BULK PART NO.	PACKAGED PART NO.
30 mesh (Fine)	700-900	700-900A
10 mesh (Coarse)	700-805	700-805A
30 mesh (Male)	----	0552947*

\*For PowrLiner 550 and 850 only

LARGE		
MESH	BULK PART NO.	PACKAGED PART NO.
30 mesh (Fine)	710-191	710-191A
10 mesh (Coarse)	710-046	710-046A

HYDRAULIC AND PNEUMATIC	
DESCRIPTION	PART NO.
PowrTwin 4900, 6900, 8900, 12000 Plus and XLT	0509762A
All GHD	710-046A
Hydra Pro IV	0509762A
PowrCoat 10" (30 Mesh)	0533968

## In-Line Filter 550-223

Designed for added filtration or when using a gun without a filter.



 In-line Gun Filter

# WHEN YOUR ARMS JUST AREN'T LONG ENOUGH

- Maximize the speed and efficiency of your operation
- Minimize danger – eliminate reaching from ladders
- Get the job done safely and quickly the first time
- Paint easily from a safe distance, keeping yourself and clothing clean



## SprayGuide™

May your lines be straighter and your profits greater! This unique free-wheeling disc glides smoothly over virtually every surface.

Cut-in around windows, doors, trim and more without time-consuming prep work.

- Eliminates time-consuming masking or cutting in with brush
- Attaches to a gun extension or an extension pole (sold separately) decreasing ladder work
- Best if used with a 411 tip. (Not included)
- Pressure rated at 3600 PSI (24.8 MPa)

DESCRIPTION	PART NO.
SprayGuide Complete Kit	0538900
SprayGuide Replacement Arm and Disk Only	0538902



## Aluminum Gun Extensions

Our aluminum gun extensions are lightweight and easy to handle and can be used with most brands of airless spray guns.

- Pressure rated at 3600 PSI (24.8 MPa)

7/8" x 14 Thread is Standard

DESCRIPTION	PART NO.
6" (15 cm)	651-070
12" (30 cm)	651-071
18" (45 cm)	651-072
24" (60 cm)	651-073



## High Pressure, Alloy Steel Gun Extensions

When you need something a little more heavy duty. Can be used with most brands of airless spray guns.

- Pressure rated at 7700 PSI (53.1 MPa).

7/8" x 14 Thread is Standard

DESCRIPTION	PART NO.
6" (15 cm)	611-280
12" (30 cm)	611-281
18" (45 cm)	611-282
24" (60 cm)	611-283

## Non-Spit Valve 0521012

Eliminate the spitting that occurs when spraying with pole extensions. Universal connection works with most industry extensions and guns.

- Pressure rated at 3600 PSI (24.8 MPa)







## Swivel Head 0538029

Titan's new easy turn swivel rotates 260 degrees for greater versatility and accessibility.

DESCRIPTION	PART NO.
7/8" x 14 Thread Swivel Head - Female	651-139
7/8" x 14 Thread Swivel Head - Male	711-600



## Extension Pole

These lightweight aluminum extensions are constructed with inner core ribs which reinforce the poles and greatly increase their rigidity. The inner core rib construction allows different length poles to be easily coupled together up to 12', while maintaining the proper rigidity to suit most job conditions.

- Reach high out-of-the-way places when spray or pressure rolling
- Adapts to most airless guns
- Includes Extension Pole Coupling (0509908)
- Pressure rated at 3600 PSI (24.8 MPa)

DESCRIPTION	PART NO.
1.5' (0.46 m) Pole	310-381-1
3' (0.9 m) Pole	310-383-1
6' (1.8 m) Pole	310-386-1
3' Extension Pole with Swivel Head, 7/8" Nut	310-390
6' Extension Pole with Swivel Head, 7/8" Nut	0279976L

## LX-70 In-Line Gun 550-475

- All metal construction
- A natural extension to any pole
- In-handle filter
- Swivel reduces hose kinks and ensures effortless control
- Pressure rated at 3600 PSI (24.8 MPa)

Repair Kit (550-521)



## 6' Outrigger 757-920

Convert existing gun to 6' (2 m) pole gun and back in seconds. Outrigger allows you to increase production and profits. No additional hoses or fittings required.

- Constructed of lightweight and rigid aluminum to reduce arm fatigue
- Large gun installation holder and knob
- Adapts to all Titan airless spray guns and most manufacturers' airless spray guns

## LX-75 Pole Gun 550-495

Reach those high, out-of-the-way places that normally require the use of a ladder or scaffolding.

- All metal construction
- Full-length needle ensures positive shut-off at tip
- Gun swivel
- In-handle filter
- Ergonomic design
- Pressure rated at 3600 PSI (24.8 MPa)

Repair Kit (550-487)



Angle Adapter Assembly



Extension Pole Coupling

## Angle Adapter Assembly 0509907

Adapt any extension pole to any standard airless gun. Because of its right-angle design, the angle adapter allows the pole to extend from the gun at the same angle as the handle. The result is greater efficiency and comfort.

- Pressure rated at 3600 PSI (24.8MPa)

## Extension Pole Coupling 0509908

Allows you to connect different length extruded poles together to create different lengths for any application. (Do not exceed 12')

# THE RIGHT EQUIPMENT FOR THE JOB



High Quality Airless Fluid Hoses and Whip Hoses

I.D.	LENGTH		MAX. WORKING PRESSURE - PSI (MPa)					END CONNECTION
			3300 (22.8)	3600 (24.8)	4500 (31.0)	6500 (44.8)	7500 (51.7)	
	FEET	METERS	PART NO.	PART NO.	PART NO.	PART NO.	PART NO.	
1/8"	3	0.9	---	---	0290685	---	---	1/4" NPSM (F/M)
3/16"	3	0.9	0291004	---	---	---	---	1/4" NPSM (F/M)
	5	1.5	316-506	---	---	---	---	1/4" NPSM (F/M)
	9	2.7	550-222	---	---	---	---	1/4" NPSM (F/M)
	25	7.6	0291007	---	---	---	---	1/4" NPSM (FBE)
	50	15.2	0291008	---	---	---	---	1/4" NPSM (FBE)
1/4"	3	0.9	---	---	250450003	250650003	250750003	1/4" NPSM (FBE)
	6	1.8	316-533*	---	250450006	250650006	250750006	1/4" NPSM (FBE)
	6	1.8	550-227	---	---	---	---	1/4" NPSM (F/M)
	25	7.6	316-513	---	---	---	---	1/4" NPSM (FBE)
	50	15.2	316-505	0286498	250450050	250650050	250750050	1/4" NPSM (FBE)
	100	30.5	---	---	250450010	250650010	250750010	1/4" NPSM (FBE)
3/8"	6	1.8	---	---	375450006	375650006	375750006	3/8" NPSM (FBE)
	25	7.6	0508342	---	---	---	---	3/8" NPSM (FBE)
	50	15.2	0291006	0286499	375450050	375650050	375750050	3/8" NPSM (FBE)
	100	30.5	---	---	375450010	375650010	375750010	3/8" NPSM (FBE)
1/2"	25	7.6	225-112*	---	---	---	---	1/2" NPSM (FBE)
	50	15.2	250-112*	---	500450050	500650050	500750050	1/2" NPSM (FBE)
	100	30.5	---	---	500450010	500650010	500750010	1/2" NPSM (FBE)
3/4"	50	15.2	---	---	---	750650050	---	3/4" NPSM (FBE)

\*Textile Braid. Spring guards at both ends.

**FBE** Female Both Ends, **NPT** National Pipe Tapered Thread, **NPSM** National Pipe Straight Mechanical Thread, **MBE** Male Both Ends, **F/M** 1 Female / 1 Male Connection

## Moisture Resistant Hose

DESCRIPTION	PART NO.
3/8" x 7500 PSI x 50'	375750050ML
1/2" x 7500 PSI x 50'	500750050ML



It's now easy to find the proper high-pressure hose.

## High Pressure Airless Hoses

Our new high-pressure hoses are color-coded by pressure rating, making it easier to organize, identify and purchase.

First three digits indicate fitting or thread size, next four digits indicate max. PSI rating, last two digits indicate length.

INTERNAL DIAMETER	FIRST 3	PRESSURE	NEXT 4	LENGTH	LAST 2
1/4"	250	4500	4500	50'	50

Example: 1/4" X 50' 4500 PSI hose will be P/N 250450050

## Hose Shield 0521424

Protect your airless hose from paint and abrasion damage with a durable four-mil poly hose cover. Comes in 1100' lengths with perforations every 5' to fit any length of hose. Works with 1/4" and 3/8" hoses.

Hose sold separately.



## Reel-EZ Hose Reels

Eliminate hose hassles while increasing your production. Both models mount to most major manufacturers' paint sprayers with similar designs.

- The 16" Cart-Mount holds up to 100' (30.5 m) of 1/4" airless hose
- The 10" Skid-Mount holds up to 50' (15.2 m) of 1/4" airless hose
- Pressure rated at 3600 PSI (25 MPa)

Fits handles/carts 3/4" to 1-1/2" in diameter.

DESCRIPTION	PART NO.
16" Cart-Mount	769-100
10" Skid-Mount	769-200



## High Pressure Swivels

- Decreases resistance while spraying reducing overall fatigue
- Reduces hose kinking
- Pressure rated at 5000 PSI (34.5 MPa)

DESCRIPTION	PART NO.
<b>Gun-to-Hose / Hose-to-Pump</b> 1/4" (0.63 cm) NPS (F) x 1/4" (0.63 cm) NPS (M)	0509985
<b>Hose-to-Hose</b> 1/4" (0.63 cm) NPS (M) x 1/4" (0.63 cm) NPS (M)	0502135



## Air Spray Hoses

DESCRIPTION	PART NO.
25' x 3/8" Air (Red)	0550893
30' x 3/8" Air (Red)	0295689
50' x 3/8" Air (Red)	0550891
25' x 1/4" Fluid (Black)	0550894
30' x 3/8" Fluid (Black)	0277348
50' x 3/8" Fluid (Black)	0275281
4' Twin Hose	0552302
25' Twin Hose	0552303

## Air-Assisted Airless Spray Hoses

DESCRIPTION	PART NO.
25' Bonded Hose	9984595
50' Bonded Hose	0524333
4' 6" Air Whip Hose	0550860
5' Fluid Whip Hose	0550861

## High Pressure Fluid Gauge Kit 0508239

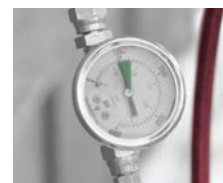
Includes: 5000 PSI (34.5 MPa) high pressure fluid gauge attached to a T-Fitting with one 1/4" (M)(.63cm) fitting & one 1/4" (F)(.63cm) fitting.

Fluid Gauge Only (0508626)



## HEA Pressure Gauge 0580495

Maximize the performance of your TR<sup>1</sup> HEA Tips.





# THE SPEED OF A SPRAYER AND THE CONTROL OF A ROLLER

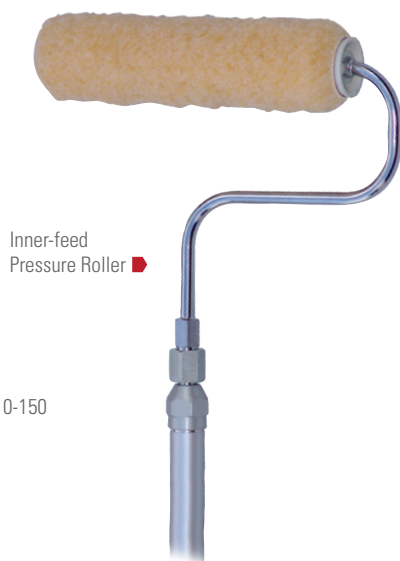
Every painting contractor has worked with a roller. It's an efficient and controlled way to apply paint. But it's also much slower than a sprayer: up to 40% of your labor time is spent loading the roller with paint. What if you could combine the two? Titan has the answer.

## Inner-feed Pressure Roller 310-934

Instead of dipping the roller into the paint, why not feed the paint into the roller? You get the best of both application worlds, increasing the speed and efficiency of your work – saving time and making a lot more money.

- Up to 40% faster than standard roller application
- The roller never leaves the surface
- Easy to use and easy to clean up

Repair Kit (310-905)



Inner-feed Pressure Roller

## Inner-feed Pressure Roller Kit 310-150

Includes:

- 3' Pole
- 90° Angle Adapter
- Inner-feed Roller head assembly
- 3/4" x 9" High Quality Inner-feed Roller Cover
- Fits onto any airless gun

## LX-70 Telescoping Roller Kit 310-950

For high production paint applications where spraying is impractical. The patented auger head design evenly distributes coating for a professional finish every time. Includes lightweight aluminum adjustable pole with a working pressure of 1200 PSI (8.3 MPa).

- Telescoping pole adjusts from 3-6' (0.9–1.8 m)
- Includes LX-70 In-Line Gun
- 9" (23cm) Inner-feeder Roller Head
- 3/4" (1.30 cm) Nap/Roller Cover

## Telescoping Pole 310-938

**CAUTION! Do not use for spray applications.**

## Spray Roller 310-049

On rough, porous surfaces like stucco and concrete block, many contractors apply the coating with a sprayer and then back-roll it into the surface. Now you can spray and roll at the same time.

- Ideal for very porous and rough surfaces
- Saves both time and money



## 3-in-1 Spray/Roll Application Kit 310-110

The Spray/Roll Application Kit offers the proper airless spray painting tools for just about every possible painting condition. It's the first complete application kit created for professionals.



Includes:

- LX-70 In-Line Gun
- 9" (23 cm) Spray Roller head assembly
- 3' (9 m) Extruded Pole
- 9" (23 cm) Pressure Roller head assembly
- Swivel head assembly

## Roller Head Replacement Covers

### SPRAYER ROLLER REPLACEMENT COVERS

DESCRIPTION	NAP	PART NO.
9" (23 cm)	3/4" (1.90 cm)	311-075-9

### INNER-FEED PRESSURE ROLLER REPLACEMENT COVERS

DESCRIPTION	NAP	PART NO.
9" (23 cm)	3/4" (1.90 cm)	0155208K
9" (23 cm)	3/8" (0.95 cm)	0155206K

# KEEP YOUR EQUIPMENT CLEAN AND WORKING FOR YOU

No matter what the sprayer – hydraulic, gear-driven, gas-powered or electric – if you want a long service life you will need to care for it with the same attention you care for your own car or truck. That means changing the oil, lubricating the piston, cleaning the unit, the gun and the tip. Titan has all the products you need to keep your accessories and equipment clean and functioning in top condition.

## PumpRunner 0286008

PumpRunner prevents the inlet valve from drying out, ensures clean transport and reduces clean up time. Works on most high rider model sprayers.

Sprayer sold separately.



## LS-10 Liquid Shield Plus™

Cleans and protects your spray system against rust and corrosion, extending the life of your pump.

■ Includes anti-freeze protection

DESCRIPTION	PART NO.
4 oz. Bottle	314-483
1 Qt. Bottle	314-482
1 Gallon Bottle	0521418

## Pump Shield™ 0297055

Cover your sprayer to prevent paint overspray from sticking to it. Keeps your sprayer looking like new.



## Tip Clean™ 314-207

Hour-glass design allows easy cleaning of all airless tips and safe storage. Cleaning fluid removes contamination and paint residue, ensuring best spraying results. **7 oz. (200 ml) Bottle**

## Piston Lube™

Specially formulated to prevent materials from adhering to the piston rod. Suitable for use with most airless piston pumps.



DESCRIPTION	PART NO.
4 oz. Bottle	314-481
8 oz. Bottle	314-480
1 Qt. Bottle	700-926

## Paint Mate™

Water-based coating additive that significantly improves atomization with HVLP sprayers without compromising the integrity of the coating.



DESCRIPTION	PART NO.
1 Qt. Bottle	0508071
1 Qt. Bottle (Case of 6)	0508069

## Air Care™ 311-101

Pneumatic equipment lubricant storage protector. Contains premium additives to extend life of equipment. **1 Qt. Bottle**



## Coolflo™

Hydraulic Fluid for PowrTwin™, Hydra™ and sealed hydraulic sprayers.

DESCRIPTION	PART NO.
1 Qt. Bottle	430-362
1 Qt. Bottle (Case of 12)	430-363

## Lubriplate™/GR-132

Specially designed for gear boxes.



DESCRIPTION	PART NO.
14 oz. Can	314-171
6 lb. Can	9870307

## Part Renu™

Safely remove paint from spray guns and sprayer accessories. This non-flammable, water-based cleaner is environmentally safe, odor free and will not burn skin. Easily washes off with water.



■ Starter Kit includes easy-to-use strainer

DESCRIPTION	PART NO.
1 Gallon Part Renu™	0521423
5 Gallon Starter Kit	0521010

# A FITTING FOR EVERY JOB

Spraying is more than just hooking up a hose. Sometimes the situation calls for extending hose length or altering the angle of the hose connected to the sprayer. That's when you need Titan manifolds and fittings. Our fittings are manufactured from quality carbon steel and plated for maximum corrosion resistance.

## Couplings

HOSE TO HOSE	
DESCRIPTION	PART NO.
1/4" NPS(M) x 1/4" NPS(M)	05045
1/4" NPT(M) x 3/8" NPS(M)	812-003
3/8" NPS(M) x 3/8" NPS(M)	490-014
1/2" NPT(M) x 1/2" NPS(M)	449-621

Maximum Working Pressure: 5000 PSI (34.5 MPa)



HIGH PRESSURE HOSE TO HOSE	
DESCRIPTION	PART NO.
1/4" NPTF (M) x 1/4" NPTF(M)	9885642
3/8" NPTF (M) x 3/8" NPTF(M)	9885643
1/2" NPTF (M) x 1/4" NPTF(M)	9885644
3/4" NPTF (M) x 1/2" NPTF(M)	9885645
3/8" NPTF (M) x 1/4" NPTF(M)	9885646
1/2" NPTF (M) x 3/8" NPTF(M)	9885647
1/2" NPTF (M) x 1/2" NPTF(M)	9885648

Maximum Working Pressure: 7500 PSI (51.7 MPa)



MANIFOLD TO MANIFOLD	
DESCRIPTION	PART NO.
1/4" NPT(M) x 1/4" NPT(M)	490-002
1/4" NPT(M) x 3/8" NPT(M)	490-006
3/8" NPT(M) x 3/8" NPT(M)	814-004
3/8" NPT(M) x 1/2" NPT(M)	814-005
1/2" NPT(M) x 1/2" NPT(M)	814-006
1/2" NPT(M) x 3/4" NPT(M)	101-201
3/4" NPT(M) x 3/4" NPT(M)	814-007

Maximum Working Pressure: 5000 PSI (34.5 MPa)



MANIFOLD TO HOSE	
DESCRIPTION	PART NO.
1/8" NPT(M) x 1/4" NPS(M)	490-001
1/4" NPT(M) x 1/4" NPS(M)	227-006
1/4" NPT(M) x 3/8" NPS(M)	804-555
1/4" NPT(M) x 1/2" NPS(M)	814-003
3/8" NPT(M) x 1/4" NPS(M)	812-003
3/8" NPT(M) x 3/8" NPS(M)	808-555
3/8" NPT(M) x 1/2" NPS(M)	815-005
1/2" NPT(M) x 1/2" NPS(M)	228-002
3/4" NPT(M) x 1/2" NPS(M)	814-555

Maximum Working Pressure: 5000 PSI (34.5 MPa)



## 90° Street Elbows

DESCRIPTION	PART NO.
3/8" NPT(F) x 3/8" NPT(M)	818-002
1/2" NPT(F) x 1/2" NPT(M)	818-003
3/4" NPT(F) x 3/4" NPT(M)	818-010

Maximum Working Pressure: 5000 PSI (34.5 MPa)



## Reducer Bushings

DESCRIPTION	PART NO.
3/8" NPT(M) x 1/4" NPT(F)	817-001
1/2" NPT(M) x 1/4" NPT(F)	929-061
1/2" NPT(M) x 3/8" NPT(F)	541-009
3/4" NPT(M) x 1/4" NPT(F)	929-062
1" NPT(M) x 3/4" NPT(F)	929-076
1-1/4" NPT(M) x 1" NPT(F)	929-077

Maximum Working Pressure: 5000 PSI (34.5 MPa)



## Pipe Tees

DESCRIPTION	PART NO.
1/4" NPT(F)	970-023
3/8" NPT(F)	817-002
1/2" NPT(F)	817-003
3/4" NPT(F)	817-004

Maximum Working Pressure: 5000 PSI (34.5 MPa)



## Swivel Unions

DESCRIPTION	PART NO.
1/4" NPS(F) x 1/4" NPT(M)	490-005
3/8" NPS(F) x 1/4" NPT(M)	490-042
1/4" NPS(F) x 3/8" NPT(M)	490-032
3/8" NPS(F) x 3/8" NPT(M)	490-043
1/2" NPS(F) x 1/2" NPT(M)	200-555
3/4" NPS(F) x 3/4" NPT(M)	138-037
1" NPS(F) x 1" NPT(M)	200-556

Maximum Working Pressure: 5000 PSI (34.5 MPa)



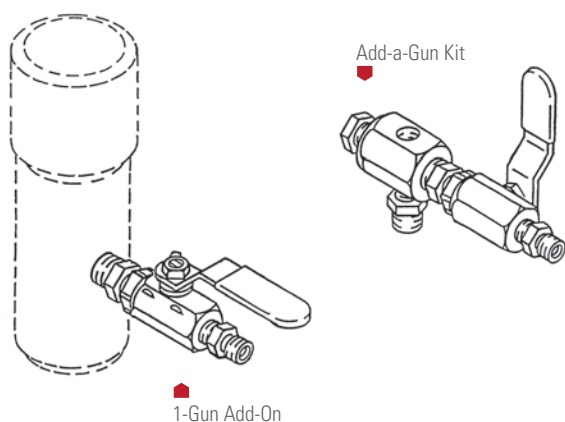
## Pipe Plugs

DESCRIPTION	PART NO.
1/4" NPT(M)	227-027
3/8" NPT(M)	227-033
1/2" NPT(M)	210-023
3/4" NPT(M)	210-038

Maximum Working Pressure: 5000 PSI (34.5 MPa)







## Gun Add-On Kits:

Can be used on pumps with an open 3/8" NPT port on the manifold.

	1-GUN ADD-ON		ADD-A-GUN	
	975-111 1/4" Hose	975-311 3/8" Hose	975-200 1/4" Hose	975-300 3/8" Hose
INCLUDES	PART NO.	PART NO.	PART NO.	PART NO.
Nipple, Hex	814-002	814-004	814-002	814-004
Ball Valve	940-553	941-555	940-553	941-555
Nipple, Hex	227-006	808-555	227-006	808-555
Plug, Pipe			227-033	227-033
Block, Manifold			970-100	970-100
Nipple, Hex			814-004	814-004

Maximum Working Pressure: 3600 PSI (24.8 MPa)

## Multiple Gun Add-on Assemblies (1/4")

Hose connection 1/4" MPSP (M).

	975-212 2-Guns	975-213 3-Guns
INCLUDES	QTY.	QTY.
1-Gun Add-On (975-111)	1	1
Add-A-Gun Kit (975-200)	1	2

Maximum Working Pressure: 3600 PSI (24.8 MPa)

## Multiple Gun Add-on Assemblies (3/8")

Hose connection 3/8" NPSM (M).

	975-312 2-Guns	975-313 3-Guns	975-314 4-Guns
INCLUDES	QTY.	QTY.	QTY.
1-Gun Add-On (975-311)	1	1	1
Add-A-Gun Kit (975-300)	1	2	3

Maximum Working Pressure: 3600 PSI (24.8 MPa)

## High Pressure Ball Valve

FITTING SIZE	PSI	PART NO.
1/4"	6000 (41.4 MPa)	0533358
1/4"	7500 (51.7 MPa)	0533348
3/8"	6000 (41.4 MPa)	0533359
3/8"	7500 (51.7 MPa)	0533347

# FULL FLUID SECTION ASSEMBLIES KEEP YOU ON THE JOB.

## Impact, PowrTex & MultiFinish

DESCRIPTION	PART NO.
Impact® 340/400 Skid	0532921A
Impact 400 High Rider	0532922A
Impact 440, 540, 640 (Skid/Low Rider)	805-207A
Impact 440, 540, 640 (High Rider)	805-233A
Impact 740, 840 (All Models)	805-236A
Impact 1040	0552603A
Impact 1140 (High Rider)	805-246A
PowrTex 1200 SF	800-710
Multifinish™ 440	805-207A

## Elite Series

DESCRIPTION	PART NO.
Elite™ 3500	0537903

## PowrBeast Series

DESCRIPTION	PART NO.
PowrBeast 4700	0537255
PowrBeast 4700T	0537268
PowrBeast 7700, 9700	0537256

## PowrTwin & Hydra Series

DESCRIPTION	PART NO.
PowrTwin™ 4900 Plus (All Models)	107-005
PowrTwin 6900 Plus (All Models)	236-005
PowrTwin 6900 Plus DI (All Models)	451-210
PowrTwin 8900 Plus, 12000 Plus (All Models)	236-015
PowrTwin 12000 Plus DI (All Models)	236-024
Hydra™ Pro IV	185-551A

## PowrLiner Series

DESCRIPTION	PART NO.
PowrLiner™ 2850	0290513A
PowrLiner 4950/4955 (All Models)	107-005
PowrLiner 6950/6955 (All Models)	236-005
PowrLiner 8950/8955 (All Models)	236-015

## AirCoat & PowrCoat Series

DESCRIPTION	PART NO.
AirCoat™ 423	0533243
AirCoat 620	0533244
PowrCoat™ 730, 940	185-551A
PowrCoat 745, 960	155-559A
PowrCoat 975	0533908
PowrCoat 1045	0533262
PowrCoat 1064	0533263
PowrCoat 1072	0533264

# HARD WORKING LINE STRIPER ACCESSORIES

## WindGuard™ Spray Shield 0290623

Spray shield protects spray pattern from wind, minimizing over-spray. Works well when applying diluted athletic field marking paints. Adjustable for easy “on the fly” line width changes – 4", 6" or 8" and is easily removed from sprayer.

- Attaches to any Titan PowrLiner and most competitive models
- Spring-loaded shields promote forgiveness on uneven surfaces
- Lightweight – only 5.5 lbs.



■ WindGuard™ Spray Shield



■ Stencil Kit

## Stencil Kits

Molded of 1/8" (.15 cm) polyethylene, these stencils are very durable and lay flat on surfaces for clean and accurate marking.

### STENCIL KIT 1

INCLUDES	PART NO.
39" (99 cm) Handicap	0290932

### STENCIL KIT 2

INCLUDES	PART NO.
39" (99 cm) Handicap	0290933
12" (30 cm) No Parking	
12" (30 cm) Numbers 0–9	

### STENCIL KIT 3

INCLUDES	PART NO.
42" (105 cm) Straight and Curved Arrows	0290934
39" (99 cm) Handicap	
12" (30 cm) Numbers 0–9	
4", 12" (10, 30 cm) No Parking	
4", 12" (10, 30 cm) Fire Lane	
4" (10 cm) Reserved	
4" (10 cm) Visitors	

## TR² Line Striping Tips

From striping to stenciling – with the twist of the tip.



STRIPING TIP SIZE	STENCIL TIP SIZE	FLAG	FILTER COLOR	PART NO.
417	517	Yellow	White	694-1708517
419	519	Yellow	White	694-1908519
421	621	Yellow	White	694-2108621
423	623	Yellow	White	694-2308623

## LineSite™ Laser Pointer 0290175A

Great for starts/stops, curb striping, executing perfectly straight lines and training new employees. High-intensity green laser is easy to see in daylight.

## HandiBead™ Bead Dispenser 0290953A

Apply glass beads with consistency and accuracy. Eliminates hand tossing glass beads on stop bar or crosswalk applications.

- Adjustable diffuser can disperse material up to 15" wide



■ HandiBead Bead Dispenser

## Aluminum Die

Order in standard widths ranging from 4–12" or call for custom sizes.

- Available in adjustable mil
- Double drop compatible

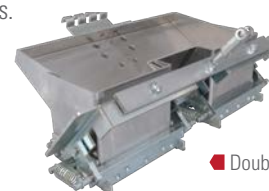


■ Aluminum Die

## Double Die

Allows you to lay both center lines in a single pass, increasing productivity and putting more money in your pocket.

- Double drop compatible



■ Double Die

DESCRIPTION	PART NO.
Double Die, 4" x 4" x 4", 90 mil	ASE17100000A.090
Double Die, 4" x 4" x 4", 125 mil	ASE17100000A.125
Double Die, 4" x 4" x 4", Adjustable	ASE17100000A.ADJ
Double Die, 4" x 3" x 4", 90 mil	ASE17200000A.090
Double Die, 4" x 3" x 4", 125 mil	ASE17200000A.125
Double Die, 4" x 3" x 4", Adjustable	ASE17200000A.ADJ
Double Die, 4" x 6" x 4", 90 mil	ASE17300000A.090
Double Die, 4" x 6" x 4", 125 mil	ASE17300000A.125
Double Die, 4" x 6" x 4", Adjustable	ASE17300000A.ADJ



## Glass Bead Dispensing Systems

Includes hopper, hose and dispenser.

DESCRIPTION	PART NO.
1-Gun Kit (4–6")	424-826
2-Gun Kit (4–6")	424-836
1-Gun Kit (12")	424-840
2-Gun Kit (12")	424-841
<b>Add a Second Dispenser to your One-Gun Kit</b> Second Dispenser with Hose (4–6")	424-816

Compatible with: 4950, 4955, 6950, 6955, 8950, 8955, 4900XLT, 6900XLT and 8900XLT.  
LazyLiner™ and PowrLiner™ sold separately.



SureTrak™ Floating Gun Kit



LazyLiner™ Tray

## SureTrak™ Floating Gun Kit 759-120

Keeps the gun at the proper height from the surface for perfect lines over rough terrain.

- ▀ Works great on pavement, grass and turf
- ▀ Attaches to PowrLiner™ 4950, 4955, 6950, 6955, 8950 and 8955

## LazyLiner Tray

Use this attachable tray system as an option for carrying around additional items.

- ▀ For use on the LazyLiner Pro and Elite

DESCRIPTION	PART NO.
LazyLiner Pro Tray (Must add bumper 0290646Z)	0290646Z
LazyLiner Elite Tray	0290645Z

## Second Gun Kit

Comes complete with mounting bracket, airless gun, ¼" x 6' hose and line striping tip. Mounts to 4950, 6950 and 8950 PowrLiner.

DESCRIPTION	PART NO.
S-3 Gun Kit	759-138
S-5 Gun Kit	759-038
PowrLiner 2850 Gun Kit	0290310

## SmartArm™ Assembly 0290382

Built to make line adjustments and transportation quick and easy.

- ▀ Pivots down for spraying and up for transportation/storage
- ▀ Locks at any angle for curb striping
- ▀ Adjust gun height (fan pattern) up/down with the turn of a lever
- ▀ Automatically centers spray arm for easy set-up
- ▀ Graduated to return to your preferred spray position

## Striper Add-On Accessories

RECOMMENDED GUNS	
DESCRIPTION	PART NO.
LX-40 Gun	550-540
RX-80 Gun	0538015
S-3 Gun	0550060
S-5 Gun	0550070

UPGRADES	
DESCRIPTION	PART NO.
PowrLiner™ 850 Caster Release Kit	0293970
12-Gallon Hopper	759-130
Polyethylene 5-Gallon Pail Cover	759-147
Turf Kit for PowrLiners 4955–8955	759-155

## Hitches and Bumpers

DESCRIPTION	PRO	ELITE
	PART NO.	PART NO.
PowrLiner 2850	0290043Z	0290043Z
PowrLiner 3500 Hitch Kit and Bracket	0537935	0537935
PowrLiner 3500 Hitch Bracket	0290182	0290182
PowrLiner 4950, 4900xlt, 6900xlt, 8900xlt	0290180	0290180
PowrLiner 6950, 8950	0290180	0290180
PowrLiner 4955, 6955, 8955	0290180	0290180
Graco® 3900 and Up	0290050Z	0290050Z
Bumper / Engine Protection Bar	0290646Z	Included

The drivers are not shipped with a hitch; use chart to identify which hitch to order.

## TOOLS FOR THE PERFECT FINISH



### Maxum Elite Gun

For contractors and finishing professionals who expect flawless results with the versatility to use gravity- or siphon-fed cup gun.

- Removable and reversible fluid chamber design enables use with standard pressurized cup and pressurized gravity cup
- Stainless steel fluid passages
- Fluid needle stays with packing and head assembly for color and tip size changes—allows for easier storage and clean up
- Integrated check valve in gun head
- Patented grip design for stay-cool operation
- Multi-position pick-up tube for spraying at various angles
- Comes standard with a #3 Proset (Needle set)

DESCRIPTION	PART NO.
Maxum Elite Gun with 1 Qt. Cup	0524027
Maxum Elite Gun with Gravity Cup	0524052

#### MAXUM ELITE ACCESSORIES

DESCRIPTION	PART NO.
Pressure-Fed 1 Qt. Cup	0524027
Front End Accessory with 1 Qt. Cup Assembly and #3 Proset	0524073
Front End Accessory with 1 Qt. Cup Assembly and #4 Proset	0524074
Gravity Cup Accessory with Stand	0524045

### Maxum II Gun

For maximum control and pinpoint-accurate coating delivery, the Maxum II is an excellent choice for contractors and finishing professionals who need a precise fine finishing tool.

- Ability to convert from non-bleeder to bleeder gun
- Comes standard with a #3 Proset (Needle set) and 1 Qt. cup

DESCRIPTION	PART NO.
Maxum II Gun with Pressure-Fed 1 Qt. Cup	0524041



Maxum Elite Gun



Maxum II Gun



Maxum Elite Gun with Gravity Cup and Stand

### Projector Sets

DESCRIPTION	MAXUM II PART NO.	MAXUM ELITE PART NO.
#2 Proset (Fine Finish)	0276254	0524293
#3 Proset (All-Purpose)	0276227	0524294
#4 Proset (High Output)	0276228	0524295
#5 Proset (High Output)	0276229	0524296
#6 Proset (High Output)	0276245	0524297
#7 Proset (Highest Output)	0524211	0524298



Maxum II  
Standard Kit



## Maintenance and Repair Kits

### MAINTENANCE KITS

DESCRIPTION	MAXUM II	MAXUM ELITE
	PART NO.	PART NO.
Deluxe Kit	0279941	0524189
Standard Kit	0279942	0524188

Gun Repair Kit  
for Maxum II Gun



### GUN REPAIR KITS / PARTS

DESCRIPTION	PART NO.
Replacement Check Valve Assemblies (three-pack)	0297051
Check Valve Seals (10-Pack)	0276257
Gun Repair Kit for Maxum II Gun	0277943
Gun Repair Kit for Maxum Elite Gun	0524187
Spring Plate Assembly	0275250
Gun Repair Kit for 3100 Gun (Siphon and Pressure-Fed)	0550985
Gun Repair Kit for 3100 Gun (Gravity Fed)	0552916



### REPLACEMENT TURBINE FILTERS

DESCRIPTION	PART NO.
Air Filter Kit (Pleated) Capspray™ 95, 105 and 115 Atomizing Air	0524523A
Air Filter Kit (Foam-Black) Capspray 75 Motor Cooling	0529390
Air Filter Kit (Foam-Green) Capspray 75 Atomizing Air	0529390
Pre-Filter Kit (Qty. 2) Capspray 55, 75, 95, 105 and 115	0524526A

## Accessories

### CUPS AND ACCESSORIES

DESCRIPTION	PART NO.
1-Qt. Cup Assembly with Swivel Tube	0277183
1-Qt. Replacement Cup	0275573
2-Qt. Remote Cup System (Complete)	0524203
Air-Tight Lid for Paint Cups (Keeps paint fresh for long periods)	0508124
Cup Assembly without Swivel Tube	0275247
600 ml HVLP Top Feed	0524211
Gravity Cup Assembly with Stand	0524045
White, 1 Qt. Cup Gaskets, Hot Solvents (6-pack)	0297052
White, 2 Qt. Cup Gaskets, Hot Solvents	0524337

White, 1 Qt.  
Cup Gaskets



## HVLP ACCESSORIES



### Air Hoses and Fittings

DESCRIPTION	PART NO.
20' x 3/4" Flex Air Hose	0275276
25' x 3/4" Flex Air Hose	0275277
30' x 3/4" Flex Air Hose	0277337
30' Air Hose	0295689
5' x 3/4" Air Whip Hose	0524405A
30' x 3/8" Material Hose	0277348
Quick Disconnect (F) Turbine	0275625

2 Qt. Remote Cup ▶



### 2 Qt. Remote Cup 0524203

Transform your turbine system into a high-capacity sprayer without adding the cost and weight of a bulky air compressor.

For use with Capspray 75–115 sprayers. 5' Air whip hose sold separately.

### HVLP Power Cart

A compact, lightweight solution to major application projects.

#### HVLP POWER CART & ACCESSORIES

DESCRIPTION	PART NO.
HVLP Power Cart	0524000
Pressure Pot Liner	0275702
Pressure Pot Liner (12-Pack)	0295272
Solvent Resistant Gasket	0508943

HVLP Power Cart ▶



3M® PPS™ Paint Preparation System

3M PPS Paint Preparation System is a unique, closed paint system that eliminates the need for separate mixing cups and filters. Instead, paint is mixed in a liner bag which marries to a direct filter and is then mounted on the spray gun with a dedicated adapter.

- As freshly-filtered paint is dispensed, the liner bag collapses, allowing the spray gun to function at any angle.
- Liner bag and filter are disposable, leaving only the spray gun and adapter to be cleaned.
- 3M PPS Paint Preparation System is a cleaner, faster system, safe from outside contamination and offers considerable time and solvent savings on gun and parts cleaning.

DESCRIPTION	PART NO.
PPS Starter Kit (Includes Pressure Cup, Collar, Gun Adapter, 10 Plastic Cup Liners and Lids)	2389965
Pressure Cup and Collar	91-460
Gun Adapter	91-475
Plastic Cup Liner and Lids (25)	91-462-25



PowerTex™ Gun

Get more usage out of your Capspray HVLP turbine. Simply fill the hopper, plug into any Capspray HVLP turbine and air hose and start texturing. Achieve a unique textured finish with three spray nozzles –popcorn, knockdown and orange peel – each delivers a professional look without the high cost.

POWERTEX HOPPER GUN & ACCESSORIES	
DESCRIPTION	PART NO.
PowerTex Gun	0524039
PowerTex Nozzle Kit	0524567
PowerTex Hopper with O-Ring	0520206
PowerTex Air Adjustable Valve	0524966
Air Hose Adapter Assembly	0520211



# WHEN YOUR BUSINESS DEPENDS ON THE EQUIPMENT YOU OFFER, YOU NEED TO COUNT ON THE PEOPLE MAKING THEM

Titan designs products that are easy to use and maintain, backed by the industry's strongest warranty. We think like craftsmen rather than accountants. Our relentless commitment to helping every Titan loyalist be their best leads to better work, improved ROI and growing businesses.



6/18 SL40709 JB72234A



All information contained in this brochure is based on the latest information available at the time of printing. Titan reserves the right to make changes at any time, without notice. Due to continuous innovation, specifications may progressively change. Contact one of our dependable sales reps or call our dedicated customer service team for more information.

Titan Tool | 1770 Fernbrook Lane | Minneapolis, MN 55447 | 800-526-5362 Phone | 800-528-4826 Fax | [titantool.com](http://titantool.com)